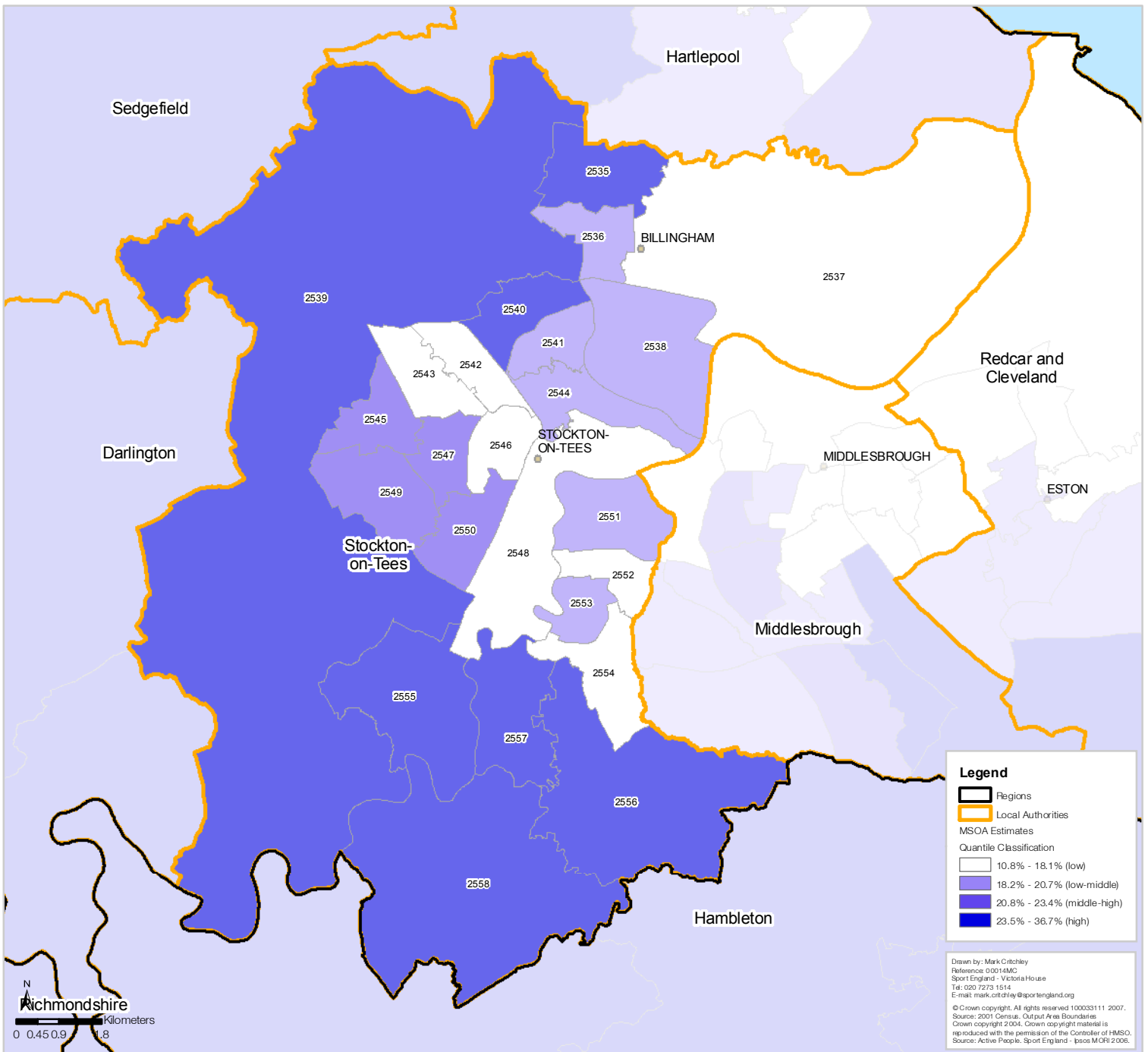


Stockton-on-Tees Unitary Authority Participation (3 x 30) Estimates by Middle Super Output Area (MSOA)



*MSOA Code	Estimate	Lower **CL	Upper **CL
E02002536	18.77%	14.40%	23.77%
E02002537	16.73%	12.80%	21.27%
E02002538	19.54%	14.84%	24.92%
E02002539	25.02%	19.49%	31.07%
E02002540	23.84%	18.11%	30.28%
E02002541	20.49%	15.64%	26.01%
E02002542	16.77%	12.76%	21.44%
E02002543	17.04%	12.88%	21.90%
E02002544	18.47%	14.09%	23.52%
E02002545	21.89%	16.74%	27.71%
E02002546	18.02%	13.68%	23.04%
E02002547	22.55%	17.39%	28.31%
E02002548	16.74%	12.74%	21.40%
E02002549	22.97%	17.79%	28.73%
E02002550	23.28%	18.01%	29.14%
E02002551	18.48%	14.04%	23.60%
E02002552	17.64%	13.45%	22.46%
E02002553	18.47%	14.06%	23.56%
E02002554	17.48%	13.28%	22.35%
E02002555	24.37%	18.93%	30.36%
E02002556	26.63%	20.60%	33.20%
E02002557	29.95%	23.63%	36.66%
E02002558	26.87%	21.01%	33.20%
E02002535	24.56%	19.11%	30.53%

*Add E0200 to MSOA map label to reference correct code in table.
 ** Confidence Level

Participation is defined as the percent of the adult population participating in at least 30 minutes of sport and active recreation (including recreational walking and cycling) of at least moderate intensity on at least 3 days a week.